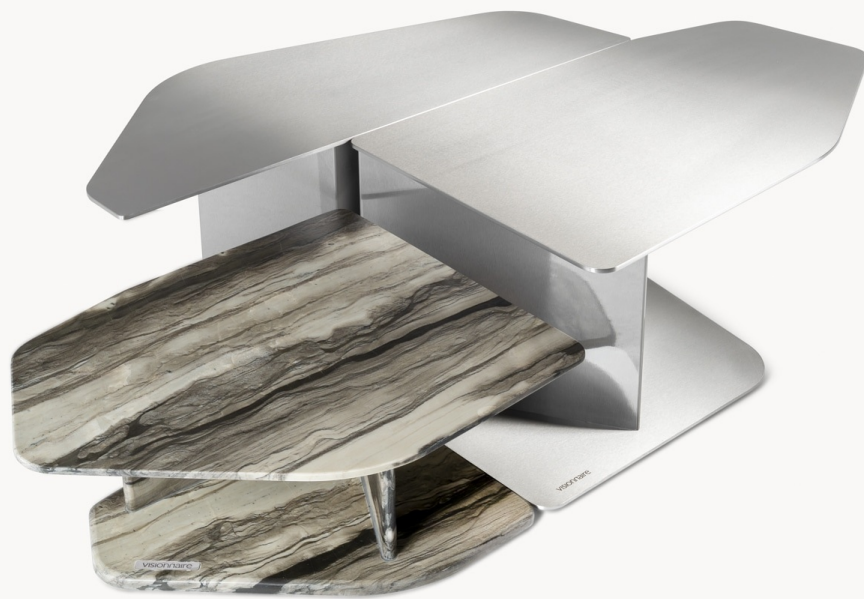


# Shear

Small tables Tavolini Small tables 小桌

Design: Alessandro La Spada



VISIONNAIRE

---

**English**

Coffee tables set composed of two steel elements and one marble element, defined by thick slabs forming base, support and top. The angled supports create a kaleidoscopic effect that reflects the marble surface, while each piece can also be used individually. Marble finishes are available polished or leather, metal parts in the selection of finishes.

---

**Russian**

Coffee tables set composed of two steel elements and one marble element, defined by thick slabs forming base, support and top. The angled supports create a kaleidoscopic effect that reflects the marble surface, while each piece can also be used individually. Marble finishes are available polished or leather, metal parts in the selection of finishes.

---

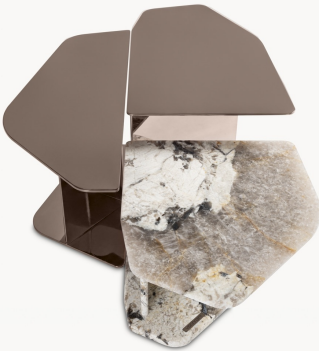
**Italian**

Tavolini bassi a trittico composti da due elementi in acciaio e uno in marmo, caratterizzati da lastre di grosso spessore che definiscono base, supporto e piano. I supporti inclinati generano un effetto caleidoscopico che riflette il marmo, mentre ogni elemento può essere utilizzato anche singolarmente. Parti in marmo disponibili lucide o leather, metalli nella selezione finiture.

---

**Chinese**

Coffee tables set composed of two steel elements and one marble element, defined by thick slabs forming base, support and top. The angled supports create a kaleidoscopic effect that reflects the marble surface, while each piece can also be used individually. Marble finishes are available polished or leather, metal parts in the selection of finishes.





To customize your product, please use our online configurator.

Per la personalizzazione del prodotto, si invita a utilizzare il nostro configuratore online.

Для индивидуальной настройки продукта воспользуйтесь нашим онлайн-конфигуратором.

如需定制产品，请使用我们的在线配置器。

---

## English

Alessandro La Spada defines himself a "designer with the manner of a craftsman". His motto: "perform in order to learn" He studied at the i.d.i. interior design institute in Milan where he graduated in 1990. From 1990 to 1994 he collaborated with the studio Sawaya e Moroni, designing interiors and following the development of the company's prototypes. Between 1998 and 2004 he was involved in the field of design and interior project dealing with formal research, underlining the semantic value of objects. He dedicates himself to the small scale production of lamps and furnishings, deepening his knowledge on materials, creating a small creative workshop specialised in processing metal. In 2005 a casual meeting led to his collaboration with Samuele Mazza, an eclectic character with a past in fashion design. His "hard wear" contribution to Mazza's soft world gave life to the "Visionnaire" and "Grantour" collection. He also lectures at the i.d.i. interior design institute, milan. He has worked as project leader for the domus academy in Milan.

---

## Russian

Алессандро Ла Спада называет себя «дизайнером с сердцем ремесленника». Его девиз: «покажи это другим, чтобы понять самому». Он получил образование в IDI, миланском Институте дизайна интерьера, который он окончил в 1990 году. С 1990 по 1994 год он сотрудничал с Sawaya e Moroni, занимаясь интерьерным проектированием, а также разработкой прототипов для компании. С 1998 по 2004 год работал в области интерьерного дизайна, посвятив себя исследованию смыслового компонента, который несут в себе предметы. Он занимается производством ограниченным тиражом линии светильников и мебели, а также изучает свойства материалов, в особенности металла, в специально созданной для этого лаборатории. Встреча в 2005 году с эклектичным дизайнером Самуэле Мацца послужила началом их совместной работы. Его «грубый» подход в сочетании с деликатным миром Мацца дали начало коллекциям «Visionnaire» и «Grantour». Он также читает лекции в миланском Институте дизайна интерьера, IDI. Имеет за плечами опыт работы в миланской школе Domus Accademy.

---

## Italian

Alessandro La Spada si definisce un "designer con i modi di un artigiano". Il suo motto: "Si impara facendo". Ha studiato presso l'i.d.i. Istituto di interior design a Milano dove si è laureato nel 1990. Dal 1990 al 1994 ha collaborato con lo studio Sawaya e Moroni, progettando interni e seguendo lo sviluppo dei prototipi dell'azienda. Tra il 1998 e il 2004 è impegnato nel campo del design e del progetto d'interni occupandosi di ricerca formale, sottolineando il valore semantico degli oggetti. Si dedica alla produzione su scala ridotta di lampade e arredi, approfondisce la sua conoscenza del materiale creando un piccolo laboratorio creativo specializzato nella lavorazione del metallo. Nel 2005 un incontro informale ha portato alla sua collaborazione con Samuele Mazza, un personaggio eclettico con un passato nel design della moda. Il suo contributo "hard wear" al mondo soft di Mazza ha dato vita alla collezione "Visionnaire" e "Grantour". Tiene anche lezioni presso l'i.d.i. istituto di design d'interni, milano. Ha lavorato come project leader per la domus academy di Milano.

---

## Chinese

Alessandro La Spada 将自己定义为“拥有工匠风范的设计师”。他的座右铭是：“在实践中学习”。他曾在米兰室内设计学院 (i.d.i.) 学习，并于 1990 年毕业。从 1990 年到 1994 年，他与 Sawaya e Moroni 工作室合作，负责室内设计并跟进公司的原型研发。1998 年至 2004 年间，他深耕设计和室内项目领域，专注研究形态美学，强调器物深刻的语义内涵。他致力于灯具和家具的小规模生产，深入研究材质语言，创建了专注于金属工艺的小型创意工作室。2005 年，一次机缘邂逅，他与曾深耕时尚设计领域的跨界设计师 Samuele Mazza 开启了合作。他以刚劲利落的设计语言，为 Samuele Mazza 柔和雅致的设计体系注入硬朗风骨，联袂缔造了“Visionnaire”和“Grantour”经典作品。他还在米兰室内设计学院 (i.d.i.) 授课。他曾担任米兰多莫斯设计学院的项目负责人。

---

**Visionnaire Milan**

Piazza Cavour 3  
20121 Milano  
Italy

Phone: +39 02 36 512 554  
Email: [info@visionnairemilano.com](mailto:info@visionnairemilano.com)  
Press: [press@ipe.it](mailto:press@ipe.it)

---

**Visionnaire Miami**

2063 Biscayne Blvd  
Miami  
Florida 33137

Phone: (786) 577 4370  
Email: [info@visionnairemiami.com](mailto:info@visionnairemiami.com)

---

**Visionnaire Los Angeles**

144 North Robertson Blvd  
West Hollywood,  
California 90048

Phone: (424) 335 0599  
Email: [info@visionnaireusa.com](mailto:info@visionnaireusa.com)

---

**Visionnaire Dubai**

Jumeirah First Villa 1,  
Plot No. 908-0, Dubai  
United Arab Emirates

Phone: 04 546 5995  
Email: [info@visionnairedubai.com](mailto:info@visionnairedubai.com)

---

**Visionnaire London**

Knightsbridge  
171-175 Brompton Road

Phone: +44 (0) 2045035398  
Email: [info@visionnaire.co.uk](mailto:info@visionnaire.co.uk)

---

**Visionnaire Shanghai**

139 Zhaohua Road, Feiyue Li (WYSH),  
Changning District,  
Shanghai,  
China

Phone: +86 186 2131 3039  
Email: [info\\_vsh@ipe-asia.org](mailto:info_vsh@ipe-asia.org)

---

**Visionnaire Hong Kong**

G/F, 33 Des Voeux Road West,  
Sheung Wan,  
Hong Kong

Phone: +852 9667 9717  
Email: [info@visionnaire.hk](mailto:info@visionnaire.hk)